

# OQC

THE SMART QUICK COUPLER  
SYSTEM FOR HANDLING  
MATERIALS



## Change any grapple to any high voltage magnet in 15 seconds!

Developed by OilQuick, the OQC system provides unique advantages for contractors in material handling.

The OQC is an OilQuick suspended quick coupler, which is primarily designed for use on loading cranes and other material handling equipment.

The system consists of an extremely rugged 360° rotator mounted on our fully hydraulic, tried-and-tested quick coupler. The OQC unit is suspended from the handling equipment's stick.

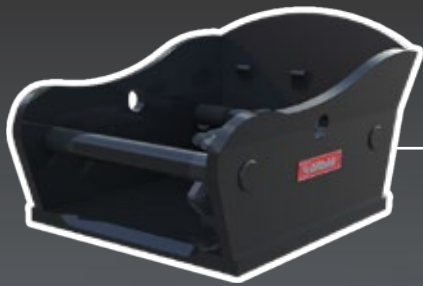
The system can also include an electric swivel for operating lifting magnets.

Rated for over 100 amps continuous with two sizes available to fit most machines.

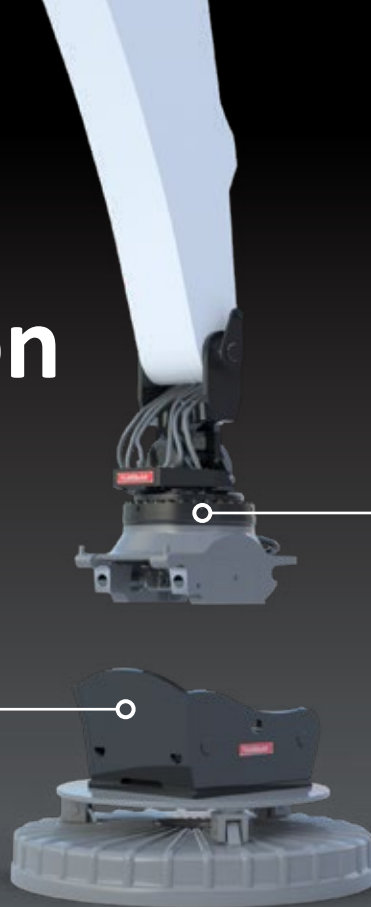


[www.oilquickUSA.com](http://www.oilquickUSA.com)

# Product description



Adapter with coupling ramp for hydraulic or high-voltage attachments



Quick coupler with rotator fits any manufacturer attachment



## Safe tool change with OQ-LockSupport

- Electronic control and monitoring system with active scanning of the lock for safe use of work tool attachments on excavators.
- Dedicated, controlled coupling procedure.
  - The operator is guided through all the steps on the control panel
  - Clear and user friendly
  - Audio and visual signals in hazardous situations
- Sensor scans the adapter pins and position of the locking cylinder
  - The locking function is activated automatically without another hydraulic function having to be used.
- All system events are logged, with the last 32 listed in chronological order
- Self-diagnosis function warns in the event of a system error

[www.oilquickUSA.com](http://www.oilquickUSA.com)